

# Lanner

## EDGE AI APPLIANCES

Integrated with AI hardware accelerators and pre-validated with AI solution partner, Lanner industrial-grade AI platforms enable edge computing solutions with specific requirements for low-latency, high-throughput, and/or power efficiency in reliable and mission-critical applications.



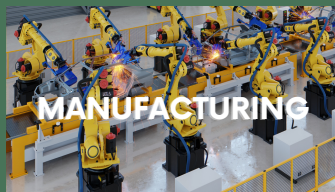
### RETAIL

- Markdown Optimization
- Customer Service Routing
- Promo prioritization
- Ad Targeting



### TRANSPORTATION

- Simultaneous Localization and Mapping (SLAM)
- AMR/AGV
- Adaptive traffic control
- ADAS



### MANUFACTURING

- MV Library & System SW
- MV Lighting
- Video Cards & CVS
- Data Ingestion & Analytics



### SMART CITY

- Smart Locks & access control
- Vehicle Tracking
- ALPR
- video content analysis

### EDGE AI SERVERS

Integrated with Intel Xeon CPU, massive storage and PCI-E expansion for GPU cards, these high-performance AI servers are designed for the most sophisticated parallel processing.



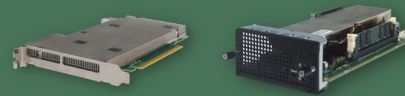
### EDGE AI APPLIANCES

Rugged edge AI appliances are designed for mission-critical applications in challenging conditions, such as retail video analytics, factory machine vision and traffic monitoring.



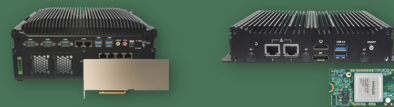
### AI ACCELERATION CARDS

Modular AI acceleration cards features onboard Intel, Hailo and NVIDIA GPU to optimize high-volume video delivery and accelerate AI-based video data analytics at the edge.



### EDGE AI STARTER KITS

AI Starter Kit aims to deliver an all-in-one platform composed of AI-accelerated hardware and application-tailored software to accelerate AI deployment at the industrial edge.



[CONTACT@LANNERINC.COM](mailto:CONTACT@LANNERINC.COM)

**LANNER ELECTRONICS INC.**

[www.lannerinc.com](http://www.lannerinc.com)

# Product Selections

www.lannerinc.com



	Edge AI Starter Kits				Edge AI Appliances				Edge AI Servers		
Product Name	LEC-2290H	LEC-2290E	LEC-2290 C/D	IIoT-I530H	LEC-7242H	EAI-I130	LEC-2290A	IIoT-I530A	FX-3420	ECA-4027	ECA-4025
Processor System	Intel® Core™ i7-8700 (Codenamed Coffee Lake S)			11th Gen Intel® Core i7-1185GRE (Tiger Lake)	Intel Celeron N3350 (Apollo Lake)	NVIDIA® Jetson Xavier NX/Jetson Nano	Intel® Core™ i7-8700 (Coffee Lake S)	11th Gen Intel® Core i7-1185GRE (Tiger Lake)	Intel® Xeon® Scalable Processor (Skylake-SP/Cascade Lake-SP)	Intel Xeon® D-2100 Processor (Skylake-D)	Intel Xeon® D-2100 Processor (Skylake-D)
AI Acceleration Support	Falcon-H8	NVIDIA A2	Intel® Movidius™ Myriad™ X	Hailo-8 AI Accelerator	Hailo-8 AI Accelerator	NVIDIA Volta GPU	Accelerator cards with PCIe16 HHHH, M.2 & mPCIe FF	N/A	Accelerator cards with PCIe16 HHHH, M.2 & mPCIe FF	Accelerator cards with PCIe16 HHHH, M.2 & mPCIe FF	Accelerator cards with PCIe16 HHHH, M.2 & mPCIe FF
Fanless	No			Yes	Yes	Yes	Yes	Yes	No	No	No
Memory	32GB			64GB	4GB	16GB	64GB	64GB	768GB	64GB	64GB
Storage	2x Swappable SATA III Drive			1x mSATA, 1x SATA, 1x M.2	Onboard 64GB eMMC, 1x SATA (Design Reserved)	1x M.2 2280 M Key, 16GB eMMC 5.1, SD Card	2x Swappable SATA III Drive	1x mSATA, 1x SATA, 1x M.2	SATA: 12 x 3.5" HDD, 2 x 2.5", 1 x M.2-22110	2 x 2.5" SATA, 2 x M.2 NVMe	2 x 2.5" SATA, 2 x M.2 NVMe
Ethernet	2x RJ45, 4x PoE			2x 2.5G RJ45, 6x RJ45 for PoE+	2x RJ45	2x RJ45 for PoE+	2x RJ45, 4x PoE	2x 2.5G RJ45, 6x RJ45 for PoE+	4x 10G SFP+, 6x RJ45	8 x 10G SFP+, 2x40G QSFP+	1 x RJ45 and 8 x 10G SFP+
I/O	6x COM, 8x DIO, 4x USB 3.0			2x COM, 8xDI, 4xDO, 4x USB 3.0	2x USB 3.0, 1x COM, 1x DP, 1x HDMI	2x COM, Audio, 2x USB 2.0, 1x HDMI, 4x DIO	6x COM, 8x DIO, 4x USB 3.0	2x COM, 8xDI, 4xDO, 4x USB 3.0	2 x USB 2.0, 2 x USB 3.0	1 x USB 3.0	1 x USB 3.0
Expansion	1x PCIe*16, 1x Mini-PCIe, 1x B Key M.2			M.2: 1x B-Key for 5G, 1x E-Key for WiFi-6, 1x M-Key For PCIe Gen4	1x M.2 B+M Key, 1x Mini PCIe	M.2: 1x B-Key for 5G, 1x E-Key for WiFi-6	1x PCIe*16, 1x Mini-PCIe, 1x B Key M.2	M.2: 1x B-Key for 5G, 1x E-Key for WiFi-6, 1x M-Key For PCIe Gen4	2x PCI-E*16, 1x PCI-E*8, VGA	1 x PCI-E*16	1 x PCI-E*16
Power	9~30 VDC			+24VDC	+12VDC	+24VDC	9~30 VDC	+24VDC	100V~240V	40~57 VDC	40~57 VDC
Mechanical	275 x 115 x 225 mm			270 x 76 x 180 mm	168 x 40 x 145 mm	201 x 65 x 196 mm	275 x 115 x 225 mm	270 x 76 x 180 mm	445 x 760 x 88 mm	438 x 371 x 44 mm	438 x 300 x 44 mm
Environment	-20°C~45°C	0°C~40°C	0°C~40°C	-40°C~55°C	-20°C~70C	-20°C~75C	-20°C~55°C	-40°C~55°C	0~40°C	-40~65°C	-40~65°C
Driver Support	Windows 10 IoT, Linux			Windows 10 IoT, Linux	Windows 10 IoT, Linux	Linux Open Source On NVIDIA SDK	Windows 10 IoT, Linux	Windows 10 IoT, Linux	Linux	Linux	Linux
Certification	CE/FCC, Class A			CE/FCC, Class A	CE/FCC, Class A, UL	CE/FCC Class A	CE/FCC, Class A	CE/FCC, Class A	CE/FCC Class A	CE/FCC Class A, UL	CE/FCC Class A, UL

## PCIe AI Acceleration Card

Name	AI Processor	Performance	Framework Support	PCIe Interface	System Compatibility	Environment	Dimension	Power	Certification
Falcon H8	4, 5 or 6 Hailo-8 AI Processors	156 TOPS 8000FPS Of ResNet-50	TensorFlow, ONNX, PyTorch	PCI Express x16	Intel x86 or ARM Devices, Linux OS (Ubuntu, Yocto)	0~70°C (Commercial) -40~85°C (Industrial)	167.65 x 111.15mm	35W	CE Class A, FCC Class A